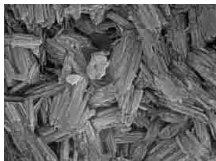


# **EXTEND PRO<sup>D</sup>**



Stop this from slowing  
down your system!



MANUFACTURED BY:



**CAMCO** Chemical  
Company

6601 Northway  
Greendale, WI 53129  
(414)-858-2300  
Fax (414)-858-2310  
bmoftatt@camcochemical.com  
www.camcochemical.com

DISTRIBUTED BY:

**Description:** **EXTEND PRO<sup>D</sup>** is formulated for use as a high-performance scale inhibitor and dispersant with a wide range of activity on deposits and foulants — **including calcium oxalate**, calcium carbonate, calcium sulfate and others - in evaporators, high heat systems, and areas where scale buildup is problematic. **EXTEND PRO<sup>D</sup>** performs well in high hardness and high total dissolved solids systems and is stable at all pH levels. **EXTEND PRO<sup>D</sup>** will inhibit scale formation allowing for extended run/production time and also soften deposits that are present and develop for quicker and easier cleaning during shutdown or cleaning cycles. **EXTEND PRO<sup>D</sup>** is composed of materials listed as secondary direct food additives and contains no materials of animal origin in its manufacture.

**Typical properties:**

- Non-foaming, non-hazardous material
- Non-splashing pourable & pumpable liquid
- Homogeneous solution
- Easily and readily disperses into solution
- Includes no known allergens
- Inhibits scale buildup and softens deposits for easy and more rapid cleaning of equipment
- Extends production / run time of evaporators and other equipment

**Use:** **EXTEND PRO<sup>D</sup>** was designed for use in a low rate continuous addition system to treat evaporators or where scale may be problematic. Exact use dilution rates will vary based on each system. Suggested addition rates range from 10-20ppm. Adjust rate as necessary for best individualized results.

**Containers and Safety:** **EXTEND PRO<sup>D</sup>** is available in drums, totes, and bulk. To promote the best safety, handle with care and use appropriate PPE when working with or handling chemical products. Please have all employees and personnel thoroughly read the MSDS prior to using this product.

***Increase your plant's production & profit potential through increased run-time and efficiency!***